

NEWSLETTER

PO Box 66 NORTH BENDIGO 3550

Dear families and friends,

Ms B is so excited! She ran into my office last night to tell me that our school has already raised \$1000 towards the Colour Fun Run! She is going to buy T-shirt samples tonight, so as students record over \$10, we can order their tops ready for the event.

The teachers are all getting together at next week's staff meeting to brainstorm ideas of what school resources we might purchase from our fundraising.

Meanwhile, the Student Leaders, SLC and House Captains are selling approximately 30 Zooper Doopers daily each first break- I donated the first lot of Zooper Doopers, so we have made \$89.00 as of yesterday to donate to the Royal Children's Hospital Good Friday appeal.

The Parents and Friends Easter Raffle donations are coming in steadily, too.

Each classroom has been bringing their box of eggs to my office, so I can weigh them and add it to the class mass graph. The P&F will give a prize to the classroom that has the largest weight of chocolates donated. Families can bring in one lot of eggs, and the weight of the bag will be split between the siblings homegroups.

Chocolates are simple wrapped in baskets, then raffled off to the school community, their families and friends.

The Easter raffle will be drawn at our Colour Run Fun Day on the last day of term, too.

It feels so good that we are collectively fundraising for our school AND sick kids across our country! Makes me so proud!

EMERGENCY LUNCHES

We are happy to provide a sandwich and small snack to students who have no lunch. Ms G will have them ready to go each morning at Breakfast Club, so all students need to do is come in to Breaky Club before school and choose what they'd like.

Please be aware that we cannot heat food for students- it is an OH&S rule!

The choices students have include:

- Cheese sandwich
- Tuna and Rice Bowl
- Lentil Bowl
- BBQ Messy Monkeys
- Fruit Cup
- Fresh Fruit

LABOUR DAY PUBLIC HOLIDAY - MONDAY MARCH 13th

A friendly reminder that this coming Monday, March 13th, is the Labour Day public holiday. Enjoy the extra day with family and friends.

SCHOOL COUNCIL

Nominations for School Council have now closed, and we congratulate Sonia Valli, Jodie Madon and Donna Rutherford on being re-elected and who will again join Daria Turnbull as our Parent Representatives. Lindsey Smylie has volunteered to go back on School Council as a Community member.

We do still have one vacant position for parent representatives, so if you are interested, please come and see me. We'd love to have you join us!

Enjoy the Long weekend,

Regards,

Jo Ryan Acting Principal

Cultural Diversity Week

Every year in March, we bring our school community together to celebrate the colourful sounds, sights, movements, and tastes of our rich multicultural communities. Lightning Reef Primary School will celebrate Cultural Diversity Week on the week of Monday 20th - Friday 24th March.

The 2023 Cultural Diversity Week theme is "Our Past. Our Future", celebrating and reflecting on the contributions of Victoria's multicultural communities. The theme invites Victorians of all ages and backgrounds to reflect on multicultural Victoria's long history and celebrate its bright future.

Cultural Diversity Week is a celebration of the best of what our multicultural society has to offer, and all students will be participating in events and activities including;

School incursion -

Wednesday 22nd March 2:15pm - 3:15pm which is an interactive music show with a cultural diversity focus.

The school is covering the cost of this incursion.

Harmony Day -

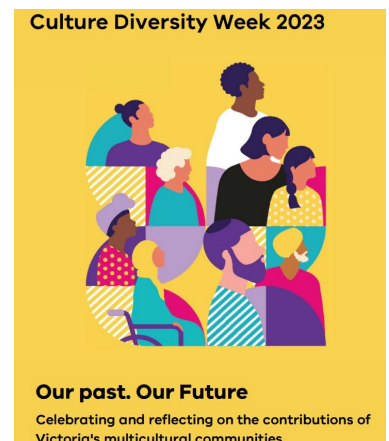
On Friday 24th March we will celebrate Harmony Day by encouraging staff and students to dress in either orange (to celebrate harmony amongst groups) or come in their national colours to celebrate their heritage.

The day will run as follows:

A smoking ceremony at 9:15am

Rotation of cultural activities across all age groups

Assembly at 2:15pm



NAPLAN

A reminder that students in Year 3 and 5 will be sitting the NAPLAN tests starting Wednesday 15th March. You can support your child by reassuring them that NAPLAN is a part of their school program and reminding them to simply do their best. It is important that students get a good night sleep and are on time to school each day. A reminder that breakfast is the most important meal of the day. Students can visit breakfast club before school if they would like to. If students are ill there will be an opportunity to catch these tests up in the following week.



Speaking and Listening

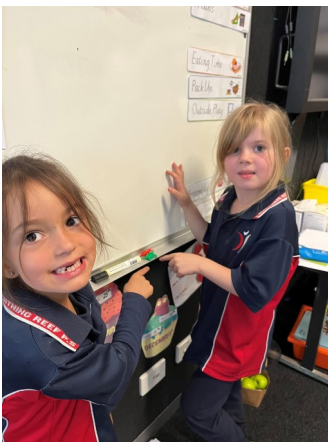
Children learn the sounds of language by listening to people talk. As children learn to talk with others, they ask questions, learn the meanings of words, and find out interesting and important things about the world around them. Many experiences of listening and talking prepare children to read.

Here are some activities to try:

- Ask your children questions that require more than a "yes" or "no" answer. Some questions that help them to talk more openly are "Why do you think that happened?" "What do we do next?" "What would happen if we did it this way?" "What can we do about that?" "How can we make this better?"
- Read stories to your children and have them tell the stories back to you.
- Draw pictures with your children and take turns telling stories about the pictures.
- Pick a topic of interest to your children and have them learn new things about it. Ask them to tell you and other family members what they have learned.
- Watch educational television programs with your children and talk with them about those programs.

Learning about position language in Room 4 and 5

Students in Room 4 and 5 have been learning about positional language such as over, under, next to, beside, on and in between.



'It is on top'



'They are next to the pencils'



'It is under the table'

Katrina Johnstone
Acting Assistant Principal



Amy Gillett : Wellbeing Lead Teacher PH: 0466 123 961

Useful websites and contacts:

Kids Matter - www.kidsmatter.edu.au

Youth Beyond Blue - www.youthbeyondblue.com.au

Headspace - www.headspace.org.au

Reach Out - www.reachout.com

Raising Children Network

- www.raisingchildren.net.au

Kids helpline - 1800 55 1800 24 hours a day, 7 days a week or [web counselling](#)

Parentline - 1300 30 1300 (8am to 10pm seven days a week) & [web counselling](#) Tuesdays and Thursdays between 11am and 2pm

WHY ATTENDANCE MATTERS - LET'S DO THE MATHS

- ⇒ Missing a day here or there may not seem like much but absences add up and can impact your child's learning more than you think.
- ⇒ When your child misses one day a week over a year, that's 40 days of school, 8 weeks of lessons and 2.5 years over their school life lost.



Key things your child gets from attending school



They learn...

and strive to achieve success.



Make friends...

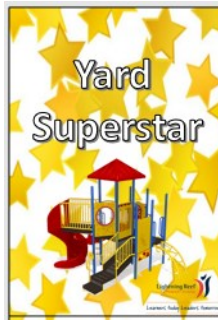
and build a sense of belonging at school.



Build skills through fun...

that will serve them through their learning journey and beyond.

Yard Superstar



Our Yard Superstar rewards students displaying our school values in the yard and going above and beyond our yard expectations. These behaviours would include, but are not restricted to:

- Helping others when hurt
- Getting help from a teacher if there is a problem
- Packing up equipment even if you didn't use it
- Including others in your games
- Helping others learn a new skill
- Great sportsmanship
- Using manners

When a student is seen displaying any of these behaviours they are given a Yard Superstar Card and told what they did to get the card.

At the end of break, the student gives the Yard Superstar card to their classroom teacher and tells them who asks what they did to get the card. The classroom teacher would then record it on Dojo.

The names of all students who received a Yard Superstar card that week, go into our treasure chest and 5 names will be drawn out at assembly. Those students drawn will have afternoon tea with Miss Ryan in her office.

School Wide Expectations & Values	Let's Just Do It YARD EXPECTATIONS AT L.R.P.S.			
	Schoolyard	Oval	Toilets	Court-yard
BE YOUR BEST	Line up quickly and quietly when the bell rings Walk away – Tell an adult	Tell an adult if you see a problem Get an adult to help if you have a problem	Use toilets appropriately	Passive play only Sports equipment free zone
BE RESPECTFUL	Follow adult directions the first time Use right words, right choice Respect others' games and space No spitting Rubbish in bins	Leave sand, sticks and stones on the ground	Keep the door closed Flush the toilet when finished Give others privacy Keep toilets tidy	Ask nicely to join in Share equipment
BE CO-OPERATIVE	Share equipment Wait your turn Agree on rules before you play Play school approved games	Play by the agreed rules	Wait your turn	Listen to others
BE RESPONSIBLE	Hands & feet to yourself Use equipment correctly Food to be eaten at eating time Walking Feet on the concrete Play in designated areas Take care of the environment	All ball kicking games to be played on the oval. Put equipment away when you have finished using it	Wash your hands Leave the toilet area as soon as you have finished Wait for your friends outside Keep games outside	Pack up when the music starts

ASSEMBLY AWARDS

Lightning Learner

Room	Name	Reason
4	Evie	for showing great confidence when answering questions during floor time.
5	Tommy	For recognising and representing numbers from 0-10 in maths.
7	San Win	For using evidence to explain his predictions in reading.
8	Ella	For applying her knowledge of letters and sounds into her writing.
2		
3	Tha Gay Su	trying hard o say the days of the week in English
9	Izac	extending himself in maths to solve a challenging AFL problem
10	Anna	for working hard to edit and revise her writing
Art	Law Per Soe	For using lots of colouring and shading techniques with his Cubism colouring activity.
PE	Ezra G	for demonstrating great throwing skills in PE
Music/Drama		
LOTE	Ezra T	For demonstrating how to count to 10 in Karen to his class.

ASSEMBLY AWARDS

Let's Just Do It!

Room	Name	Reason
4	Eh'K Lu	For helping translate for his peers.
5	Brooklyn	For being responsible for his belongings and following instructions in the classroom.
7	Theo	for showing excellent cooperation during maths, working with his peers to complete the 100s chart puzzles.
8	Htee Moo	For being brave and using her voice in the classroom a lot more this week!
2		
3	Mia	Sharing her work confidently.
9	Jai	showing responsibility in the yard by walking away when faced with a challenging situation
10	Charlotte	for cooperating respectfully with all members of the class
Art	Emilia	showing resilience by coming back to Art and trying her best.
PE	DeeSai	for trying his best with throwing the discus.
Music/Drama		
LOTE	Ember	Striving to extend her knowledge of Karen numbers.

ASSEMBLY AWARDS



Room 5

Our Year One and Prep students have made an excellent start to 2023. We are very proud of all their achievements so far!



Using our magnifying glasses and going on an ant hunt...





**Tap dancing
with some
special
'tappers' on
our shoes**



**A special
visit from
Seth's pet
bird!**



**Welcome to
our new
students -
Everleigh and
Vrishank.**

We are now using



To login, you will require your unique family username and password.
These details have been emailed to you, however if you are yet to receive them, please contact the school office.

You will initially be provided with a temporary password that you will be prompted to update to one of your choosing when you login for the first time.

To login, go to your school's Compass site. Type in your username and password and click 'Sign in'.

A screenshot of the Magic P-12 College login page. It features the school's crest on the left, which includes a shield with a cross and a banner below it that says "Magic P-12 College". To the right of the crest are two input fields: "Username" and "Password". Below these fields is a "Sign in" button, followed by Google and Facebook social media icons. At the bottom, there is a "Remember me" checkbox and a link that says "Can't access your account?".

If it is the first time you are logging in, you will be required to confirm your email address and mobile number. These details may be used by the school for SMS/email communications and also, password recovery.

A screenshot of the "Welcome to the Magic P-12 College Parent Portal" page. It starts with a heading "Welcome to the Magic P-12 College Parent Portal". Below this is a paragraph of text explaining that users need to confirm their mobile phone number and email address for school communications and password recovery. The name "Mrs Sable BROOKS" is displayed. There are two input fields labeled "Mobile" and "Email".

Also when logging in for the first time, once you have confirmed your details, you will be required to change your temporary password to one of your choosing. When you have entered your new password, click 'Save'.

A screenshot of the "Next, you will need to change your password" page. It has a heading "Next, you will need to change your password". Below this is a section titled "Your new password must:" followed by a list of requirements: "Not contain your username", "Not be a password recently used by this account", "Be at least eight (8) characters in length", "Contain at least one (1) UPPERCASE letter", "Contain at least one (1) lowercase letter", and "Contain at least one (1) number". At the bottom, there are two input fields: "New Password:" and "Confirm New Password:", followed by a "Save" button.

HAVE YOU LOGGED IN YET?
DOWNLOAD THE APP NOW
and search for Lightning Reef
Primary School!

We're excited to welcome your child back into the classroom.

Being at school is critical for your child's learning and their mental, physical, and social wellbeing.

Every day of attending school counts.

We want to support your child to have a positive start to the year. We will do this by:

- helping your child to re-establish positive school attendance routines
- working with you with respect to your child's wellbeing and learning needs
ensuring we understand where your child is up to with their learning and social-emotional development, where required
providing targeted support to help them progress

If your child is absent, please mark on Compass and provide a reason. If you don't, we will call to see if everything is okay.

If you have any concerns, please contact your classroom teacher who may refer to leadership when needed □

Amy Gillett- Wellbeing & Attendance Leader

**Happy Birthday to Allen S, Kay
Htway Kyi and Rachel R.**

We hope you had an amazing day.



Calendar of events:

Monday March 13th– Labour
Day - no school

Wednesday March 15th -
Naplan testing begins

Tuesday March 21st - School
photos

Thursday April 6th - Fun run
and last day of Term 1

Monday April 24th - Term 2
begins

CONTACT US:

5443 2501

Acting Principal:

Jo Ryan

Business Manager:

Kristie Coates

Leader– Student Wellbeing:

Amy Gillett

Leader– Disability & Inclusion:

Paul Keller

Leader– Teaching & Learning

Katrina Johnstone

Social Worker:

Gai Maddams

School Council President

Daria Turnbull

Parents and Friends

Sonia Valli & Jodie Madon

**Please
remember
smoking is
banned
within four
metres of an
entrance to
all Victorian
Schools and
within the
school
grounds, this
includes our
shared
entrance and
the bus stop**



SCHOLASTIC BOOK CLUB

Book Club is normally ordered the week before the closing date. Issue 2 closes on the 23rd of March so I will endeavour to have it in next week.

If you have an order in from Issue 1, this will be entered then also.

Please make sure correct money is sent with your order, as we are unable to give change.

Thankyou

Jennie



BE YOUR BEST



BE RESPECTFUL



BE CO-OPERATIVE



BE RESPONSIBLE



School preparedness and pre-emptive actions for the bushfire season

Fire danger ratings indicate how dangerous a fire would be if one started in those conditions and provide clear direction on the safest options for preserving life. They can be a trigger for action in community and for school and household level fire plans.



Schools and children's services listed on the Department of Education and Training's Bushfire At-Risk Register (BARR) and those at some lower risk of bushfire or grassfire on the Category 4 list will be closed when a Catastrophic fire danger rating day is forecast in their Bureau of Meteorology district.

Schools and early childhood services listed on the Department of Education and Training's Bushfire At-Risk Register (BARR) and those at lower risk of bushfire or grassfire on the Category 4 list take pre-emptive actions on elevated fire danger days to minimise the risk of being caught in a fire in these conditions. The category of risk (per the BARR or Category 4 list) determines the actions that the school or early childhood service will need to take on days of elevated fire danger.

Our school has been identified as being one of these schools at high bushfire or grassfire risk, and is a BARR school.

Our school will **close** on a day forecasted as **Catastrophic fire danger rating** in the **Northern Country fire district**.

The department will advise our school of the potential for a **Catastrophic fire danger rating** as information becomes available, however the pre-emptive closure will be **confirmed by 1pm the day prior to Catastrophic fire danger day**.

Fire danger ratings are forecast by the Bureau of Meteorology up to four days in advance. Should a Catastrophic day be forecast, we will notify you of the potential closure by an email or hard copy letter, SMS and Compass notification. Closure of the school due to a forecast Catastrophic day will be confirmed on the day prior and we will provide you with advice before the end of the school day.

Once confirmed, the decision to close will not change, regardless of improvements in the weather forecast. This is to avoid confusion and help your family plan alternative care arrangements for your child. It is also important to note that:

- No staff will be on site on days where the school is closed due to a forecast Catastrophic day.
- Out-of-school-hours care will also be cancelled on these days.
- School camps will be cancelled if a Catastrophic fire danger rating day is forecast for the Bureau of Meteorology district in which the camp is located, or if the travel involves passing through areas that have Catastrophic fire danger.
- All bus routes that travel through the Catastrophic area will be cancelled.
- Depending on which fire weather district is impacted, bus route cancellations may affect our school.

Families are encouraged to enact their Bushfire Survival Plan on Catastrophic fire danger rating days. **On such days, children should never be left at home alone or in the care of older children.**

For those of us living in a bushfire prone area, the Country Fire Authority (CFA) advises that when Catastrophic days are forecast, the safest option is to leave the night before or early on the morning of the Catastrophic day.

As part of preparing our school for potential hazards such as fire, we have updated and completed our Emergency Management Plan and reprioritised any maintenance works that may assist in preparing for the threat of fire and cleared our facility's grounds and gutters.

What can parents do?

- Make sure your family's bushfire survival plan is up-to-date and includes alternative care arrangements in the event that our school is closed due to elevated fire danger or a Catastrophic fire forecast. Further information can be found on the [CFA's website](#).
- Ensure we have your current contact details, including your mobile phone numbers. Keep in touch with us by reading our newsletters, checking Compass, by talking to your child's teacher or any other member of the teaching staff about our emergency management plan.
- Most importantly at this time of year, if you're planning a holiday or short stay in the bush or in a coastal area, you should check warnings in advance of travel and remain vigilant during your stay.
- If your child is old enough, talk to them about bushfires and your family's Bushfire Survival Plan.
- You can access current information about school and early childhood services closures, including those due to elevated fire danger, on the Department of Education and Training's website – see <http://www.education.vic.gov.au/about/programs/health/pages/closures.aspx>

Multiple sources that offer information on emergencies are listed below:

- VicEmergency app – that can be downloaded on your android and iOS mobile devices
- VicEmergency Hotline (1800 226 226)
- Website <https://emergency.vic.gov.au>
- Facebook (<https://www.facebook.com/vicemergency>)
- Twitter (<https://twitter.com/vicemergency>)
- ABC local radio, Sky News and other emergency broadcasters



Do your children play sport? Or would like to play sport? Get active today with the help of Get active Victoria.

Eligible children may receive up to \$200 to cover the costs for membership and registration fees. Applications are now open.

<https://www.getactive.vic.gov.au/vouchers/>



WANTED U12, U14 and U16 GIRLS FOOTBALLERS

The White Hills Junior Football Club is seeking any
girls interested in playing Under 12, 14 or 16
Girls football.

If you are interested in playing, please contact
Phil Murley on 0409 462 900 or email the club
whjfcclub@gmail.com for further information.



FREE COFFEE and snacks!
No booking required.



CARERS SUPPORT GROUP

Support Groups for anyone caring for a person who is
under 18 with disability, developmental delay,
neurodiversity and/or mental ill-health

If you don't live in the
Bendigo region, you can
join us online by calling us
on: 0488 605 363
We can send you a zoom
link!



Morning Tea Group
Date: 1st and 3rd Thursday
of each month

Time: 10am – 12 noon

Where: 480 Hargreaves St.
Bendigo

If you have any forms or
documents you need help
with, please bring them along!



أهلاً وسهلاً

ကျွန်းသတိပေး

Welcome

欢迎

Wominjeka

Play in the Garden Day

CELEBRATING NATIONAL PLAYGROUP WEEK

10AM - 1PM

TUESDAY MARCH 21

GARDEN FOR THE FUTURE
BOSQUET STREET, WHITE HILLS

FREE
EVENT

LOTS OF FUN, FREE ACTIVITIES INCLUDING:

- ANIMAL FARM AND PONY RIDES
- FACE PAINTING
- MUSIC AND ENTERTAINMENT
- BUBBLE PLAY AND CIRCUS ACTIVITIES
- ART AND CRAFT ACTIVITIES
- STORY TIME SESSION
- WALKING TOURS OF LARNI GARINGILANG
(MEANS HOME OF GROWTH IN THE
LANGUAGE OF THE DJA DJA WURRUNG)
- CONNECT WITH LOCAL EARLY
YEARS SERVICES



FREE FRESH FRUIT • \$2 SAUSAGES and VEGGIE BURGERS • COFFEE AVAILABLE

Coliban Water refill unit available please remember to bring your drink bottle

